

Brief Specification

1.6mm panels:
 Flat Steel
 Base Plates:
 Extended Slotted
 Top Plates:
 Extended Top Lift
 Jacklegs:
 -
 Lifting Points:
 Top Corner & Mid High Level
 Forklift Tunnels:
 -
 Cabin Height:
 2730mm
 Panel Height:
 2450
 Ceiling Height:
 2235mm
 Insulation:
 Roof: 0.25 W/m²K
 (80mm Rigid Foam)
 Walls: 0.35 W/m²K
 (50mm Rigid Foam)
 Floor: 0.25 W/m²K
 (40mm Rigid Foam & 70mm Mineral Wool)
 Construction:
 Steel Floor Panel 200 x 90 PFC
 50 x 50 SHS Quarter Point Posts
 Steel Underdrawn

External Finish (Mid-Sheen)

Body: BS 00 E 55
 Corners: BS 00 E 55
 Plinth: BS 00 E 55
 Fascia: BS 00 E 55
 High Level Lifting Eyes: BS 08 E 53
 Door: BS 00 E 53
 Shutters: -
NB.
 Finishes are indicative therefore it is the client's responsibility to ensure these are correct

Internal Finish

Wall Finish: White Vinyl Faced Plasterboard
 Ceiling Finish: White Vinyl Faced Plasterboard
 Floor Finish: Polysafe 4090 'Nordic Grey'
 Plastic Door & Window Linings: Grey
 Internal Door Architrave: RAL 7046
 Plastic Skirting: Grey PVC Inset
 Top Lath: Grey 2 Part
 'H' Sections: To Suit Board Finish
 Internal Corners: White Angle
 Worktop (400mm Deep): Black Granite
Key
 880 Steel Doorset c/w Obscured Slot Vision Panel
 Indicator Bolt
 Mirror
 h&c: Hat & Coat Hook @ 1.8m affl
 WO: Waste Outlet
 MCW: Mains Cold Water Inlet

Plumbing Notes

Dudley Stimline Contract cisterns
 Dual Flush WC
 Reduced Flow Lever Mixer Tap
 Plastic Push-fit pipework
 760 Square Shower Tray c/w Curtain
 Shower waste thru floor

Internal Partitions construction

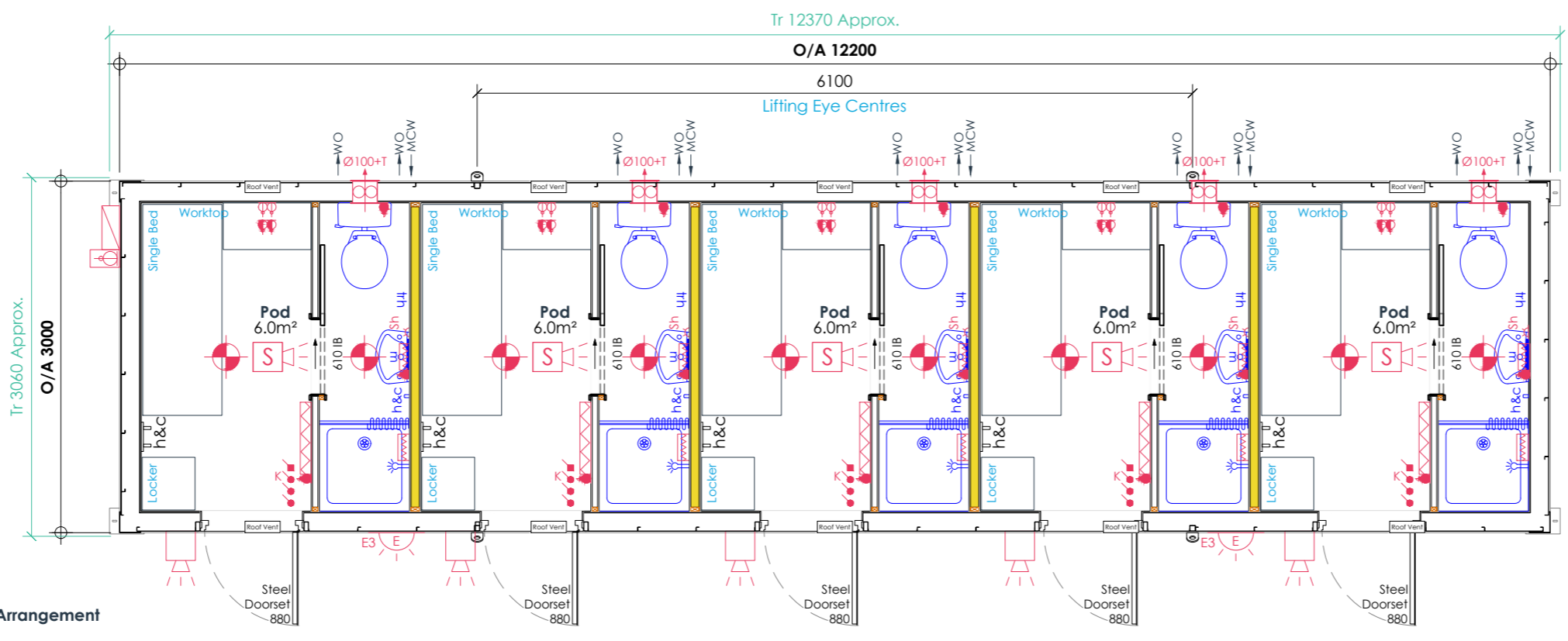
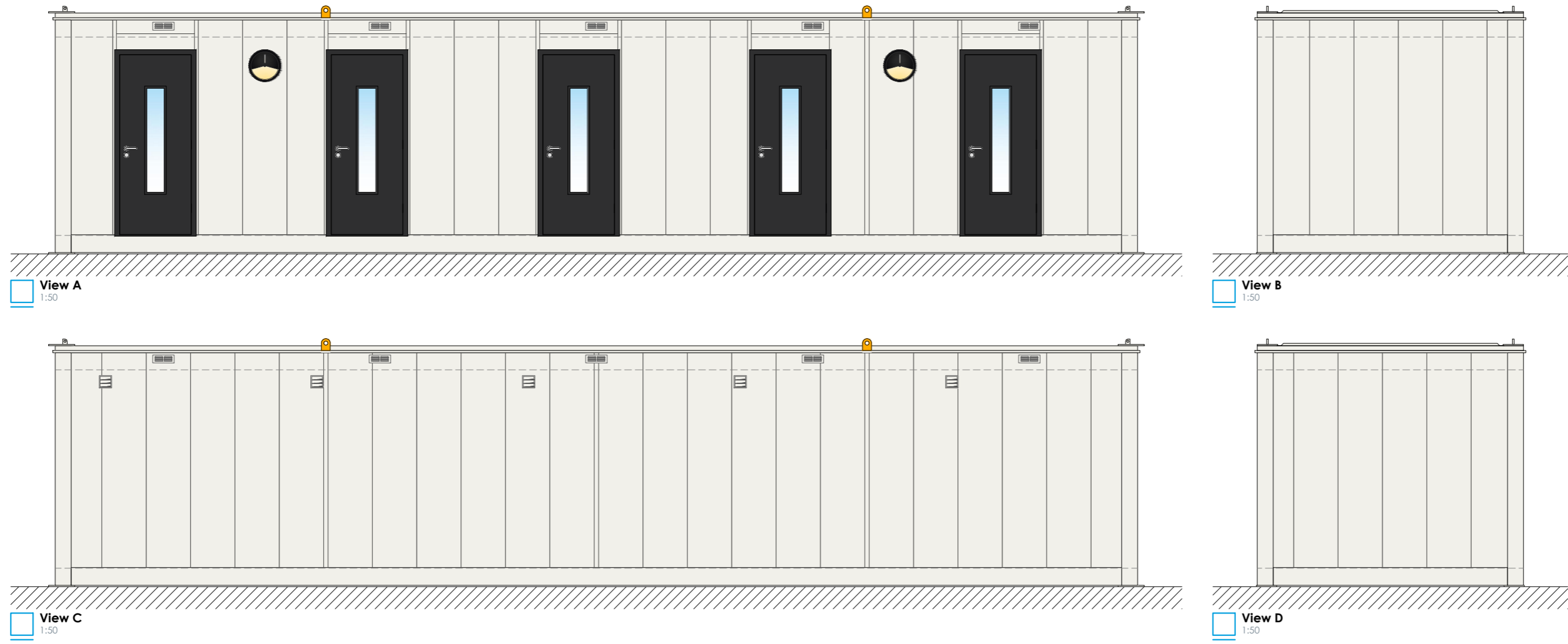
All partitions framing @ 407 ctrs
 Type G 12.5mm plasterboard on 45 x 35 mm studs:
 Type F as Type G c/w 50mm sound insulation on 70 x 35mm studs:

Electrical Key

- Three Phase Distribution Board c/w Surge Protection - Located In External Enclosure
- Appliance Inlet (Suitably Sized)
- LED Bulkhead Light c/w Emergency Backup
- LED Eyelid Bulkhead Light c/w Emergency Backup & PIR
- Light Switch
- Test Switch
- 1kW Panel Heater c/w Controller

- Double Sockets @ 500mm affl
- Double Sockets @ 1067mm affl
- Shaver Sockets @ 1067mm affl
- Instantaneous Under Sink Water Heater
- 7kW Electric Shower c/w Wall Switch Isolator
- Extract Fan (Size Stated)
T - Timer
Linked to Lighting
- Smoke Alarm (Mains Powered)
- External Sounder Beacon

Tolerance: ±2mm
 Timber Framing: 45mm
 Prod. No.: -
 Fleet No.: -
 Stickers: -
 I.D. Plate: -
 Module Weight: -
 Laden Weight: -
 Max. Lift Weight: -



General Arrangement
 1:50

rev	description	by/chk	date
P01	Issued for approval	ST/SF	27/05/20

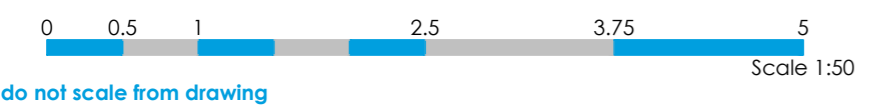


client:
Eiffage Kier

project:
Sleeping Pods

title:
General Arrangement

date: 27/05/20
 owner: ST
 checked: SF
 project ref: 2021365
 drawing ref: 100
 status: S4
 scale @ A2: As Shown
 rev: P01



do not scale from drawing